

Calgary Connect

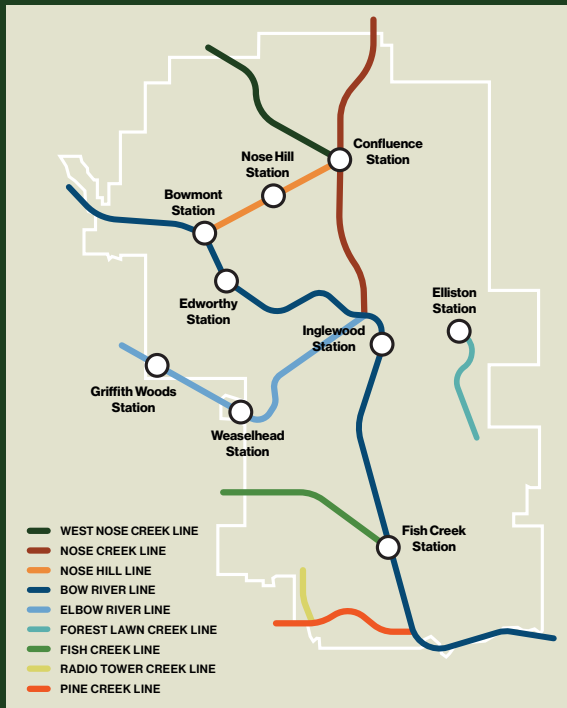
UNDERSTANDING WHO'S USING
CALGARY'S ECOLOGICAL NETWORK



Wildlife Movement Around Calgary

Calgary Connect, a long-term study in Calgary and the surrounding area, investigates wildlife movement between parks, and into/out of the city. Using 128 remote cameras across parks in Calgary, we've collected hundreds of thousands of images, revealing insights into how wildlife use the ecological corridors.

We like to think of these ecological corridors like transit corridors. Just imagine a network of transit lines shown in the map below!

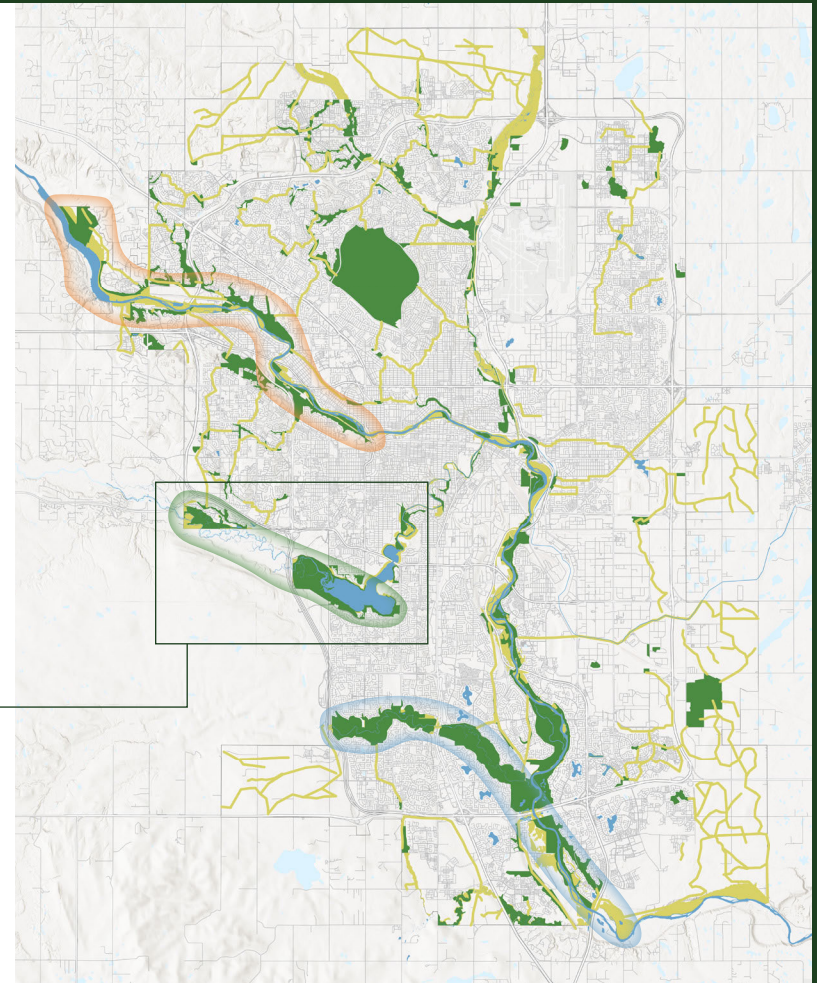


The City of Calgary values biodiversity and has identified and published an ecological network of core areas (parks) and corridors (connections between parks or to neighbouring jurisdictions).

Ecological Network

- Corridors
- Core Areas
- Bow River Corridor
- Elbow River Corridor
- Fish Creek Corridor

Calgary Connect is studying wildlife use of three main ecological corridors in Calgary. A detailed map of the Elbow River Corridor is featured on the following page.



MOVEMENT MATTERS FOR WILDLIFE

We can protect Calgary's ecological network by maintaining connections between parks and to natural landscapes outside of Calgary. By preserving ecological corridors, animals are less likely to enter neighborhoods, minimizing potential conflicts with humans.

SUPPORT EFFORTS TO:

- ✓ Naturalize parks, open space and roadsides
- ✓ Invest in safe passage to help wildlife cross roads
- ✓ Plan for ecological corridors in new developments

A CASE STUDY

Elbow River Corridor

Wildlife moves between Glenmore Parks, Weaselhead and Griffith Woods using an underpass at Tsuut'ina trail and natural lands along the Elbow River on Tsuut'ina Nation. Human activity impacts the type and number of wildlife present in a park, for example north and south Glenmore have more human activity and less wildlife.



TSUUT'INA TRAIL UNDERPASS



Six different types of wildlife have used the Tsuut'ina Trail underpass to cross Tsuut'ina Trail.

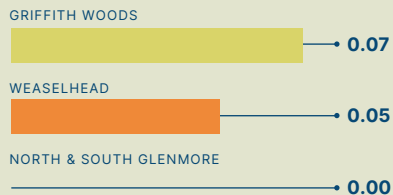
- ✓ WHITE-TAILED DEER
- ✓ COUGAR
- ✓ ELK
- ✓ BLACK BEAR
- ✓ MOOSE
- ✓ COYOTE
- ✗ BOBCAT
- ✗ MULE DEER

Graphics below are not to the same scale, but enable you to compare single species detections between parks.



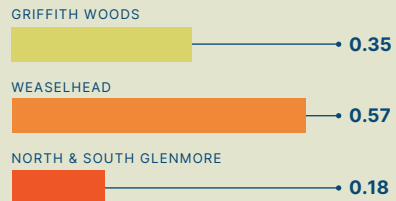
BLACK BEAR DETECTIONS

Per 100 Camera Trap Days Per Park



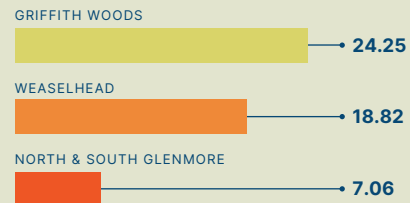
MOOSE DETECTIONS

Per 100 Camera Trap Days Per Park



WHITE-TAILED DEER DETECTIONS

Per 100 Camera Trap Days Per Park



HUMAN DETECTIONS

Per 100 Camera Trap Days Per Park

